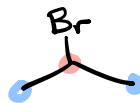
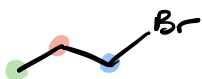
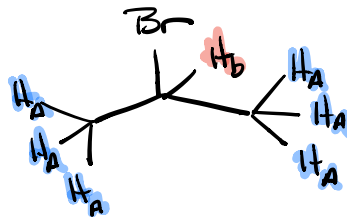
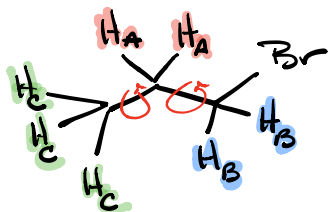


Chemical Equivalence



of Environments

of Environments

H

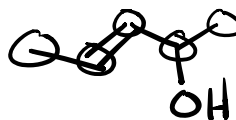
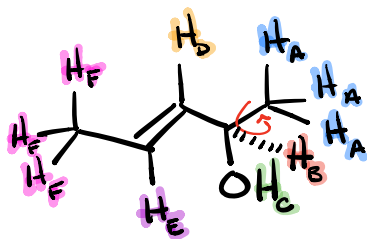
3

2

C

3

2



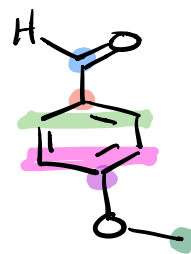
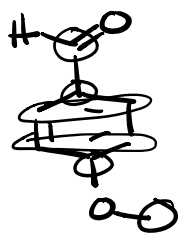
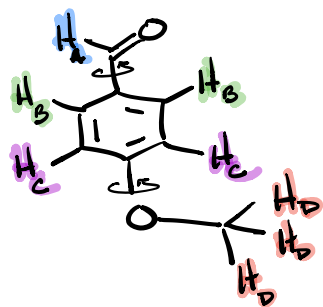
of Environments

H

6

C

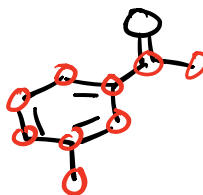
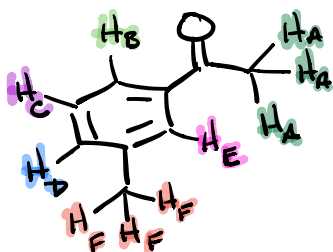
5



Environments

H 4

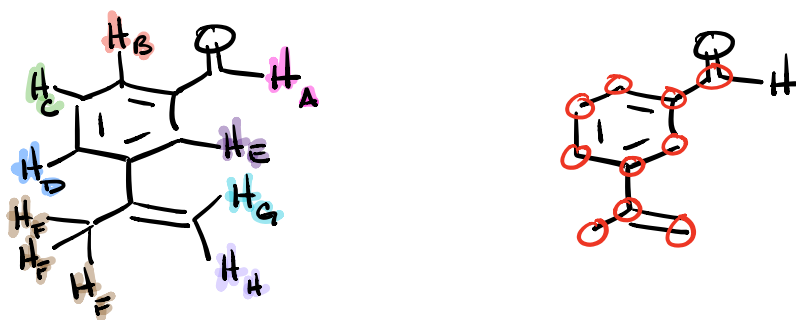
C 6



of Environments

H 6

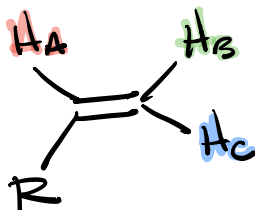
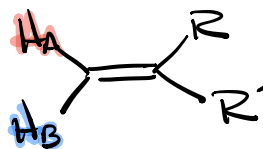
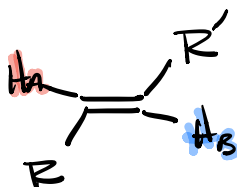
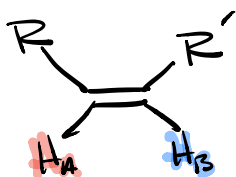
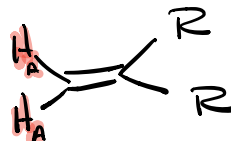
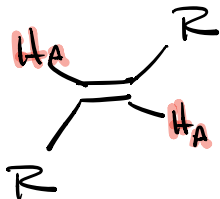
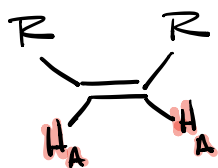
C 9

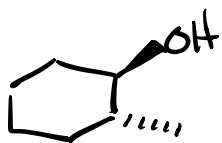


of Environments

H 8

C 10

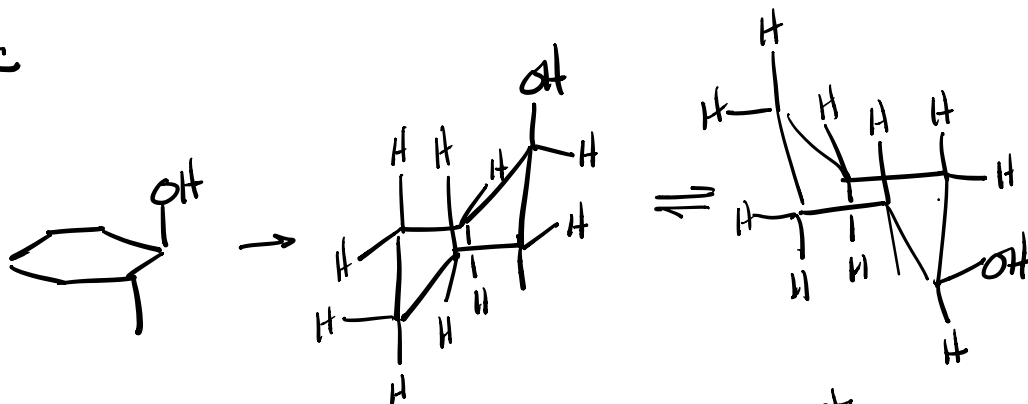




of Environments

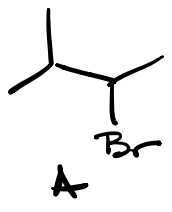
H

C

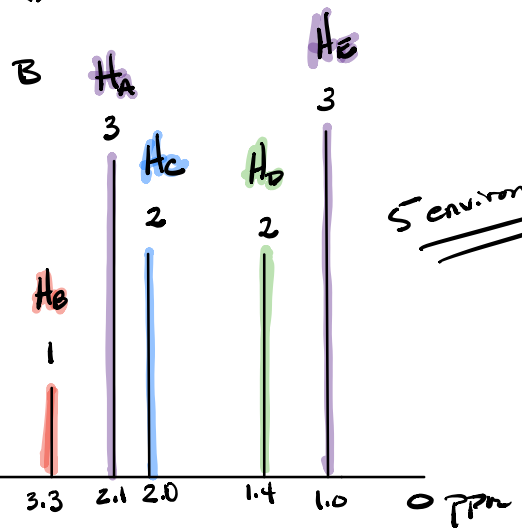
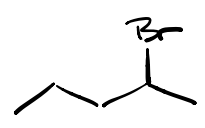


24 H environments

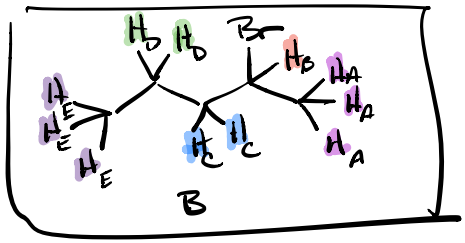
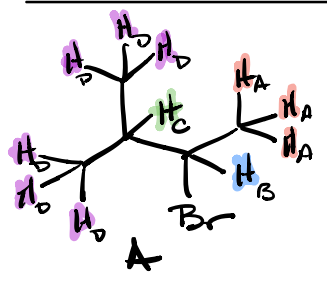
7 C



¹H-NMR

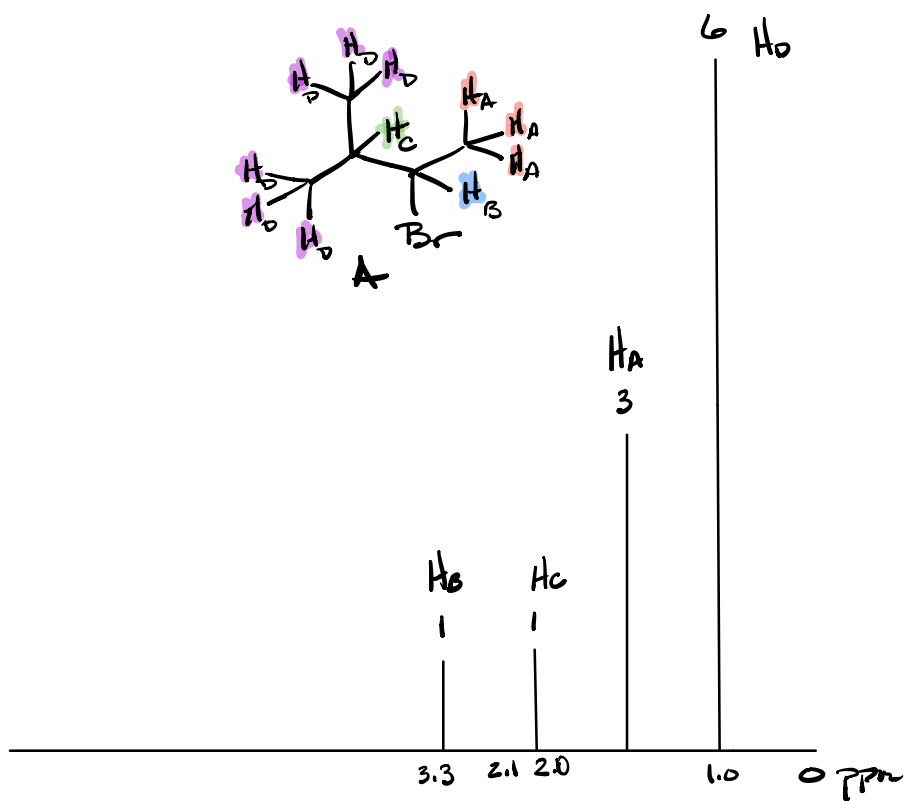


5 environments



#H of Environments

- A 4
- B 5



Signal = Environments